

## Case Study

# Sports Field Remediation. Shaw Park Brisbane

### Market Sector

RECREATION



### Application

SETTLEMENT MITIGATION



### Site Conditions

UN-ENGINEERED &  
UN-CONTROLLED TIP SITES



**LAND PAC**  
INTELLIGENT GROUND ENGINEERING SOLUTIONS

## Project

Landpac have worked on many sports fields across Brisbane and Sydney which have been constructed on un-engineered, un-controlled tip sites. The sports field surfaces are normally extremely undulating caused from long term settlements making the fields un-usable in some instances. The sports fields final use range in quality from general sports use to high end professional sports use. The need to mitigate potential long term differential settlements across the fields is critical for maximizing its use, future maintenance, drainage characteristics and aesthetics.

## Soil Conditions

The sub-surface soil profile generally consists of general household waste with a clayey capping layer and top soil.

**Client: Brisbane City Council**

**Impact Compaction Contractor: Landpac Technologies**

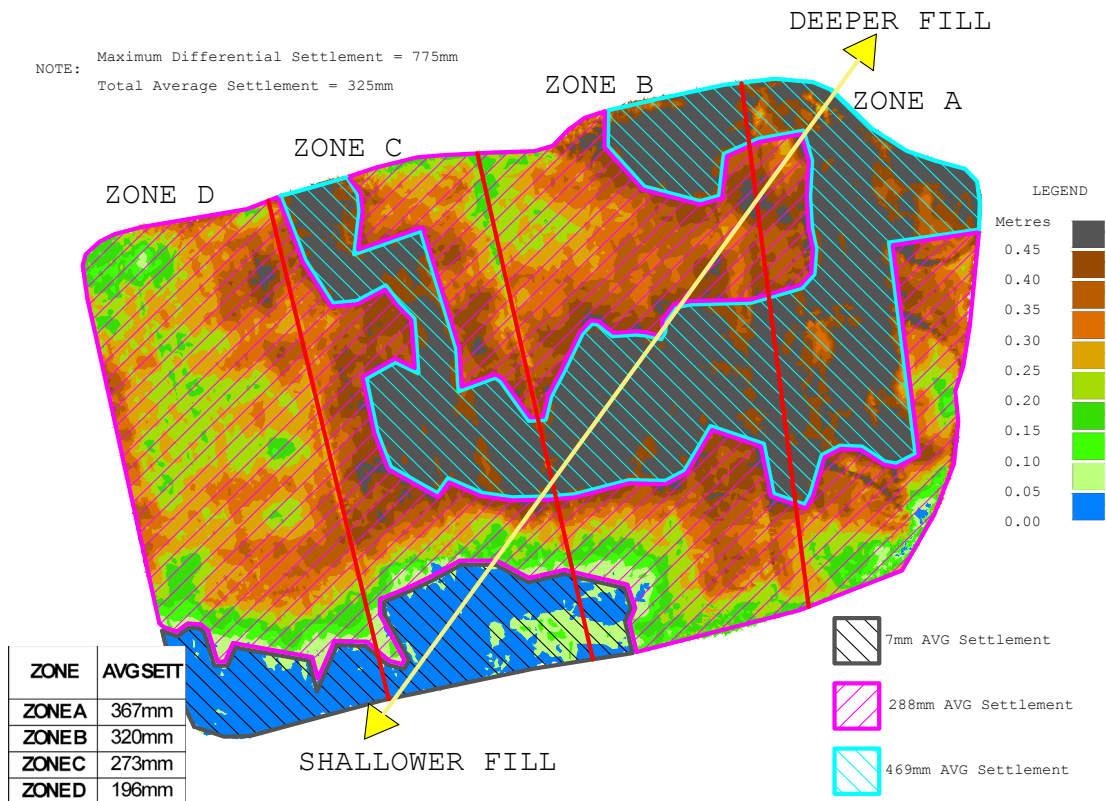
CONTINUED →

## Monitoring & Verification/QA

The Impact Compaction works were monitored using Landpac's Intelligent Compaction Measurement (ICM) system. The ICM analysis provided engineers with accurate GPS locations for soft spot removal, indicated areas with higher potential settlement, and identified when a uniform sub-grade was achieved.



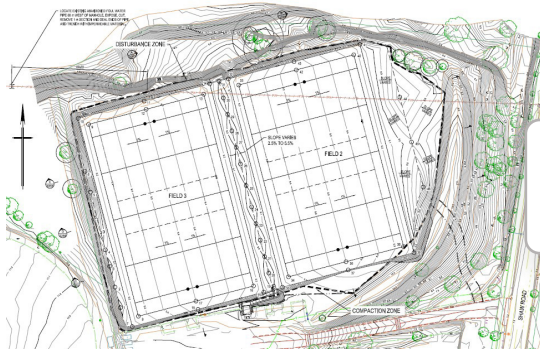
## Differential Settlement



Maximum Average Settlement 376mm

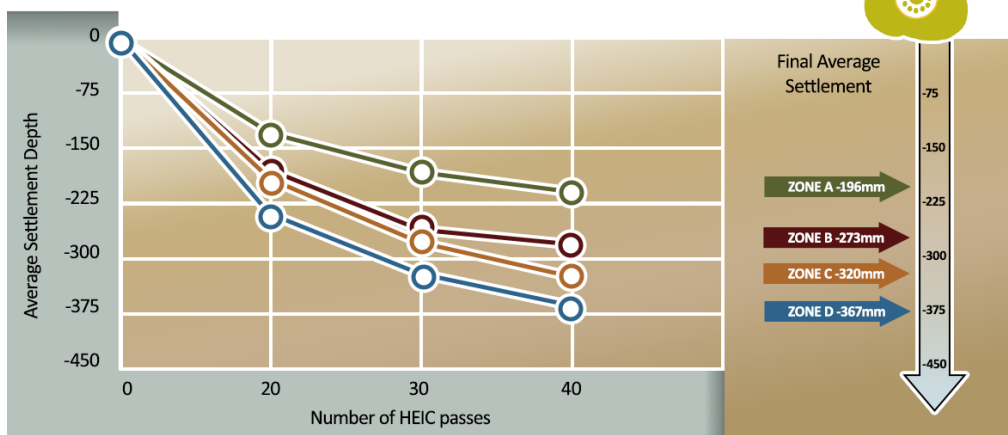


# Original Contour Site Plan



## Repair Settlement Issues for Long Term Use

### Average Incremental Settlement Per Zone



Save up to 50% of the original expected cost.



### Summary

- ✓ Elimination of an imported pavement layer.
- ✓ Superior subgrade strength.
- ✓ Proven durability.
- ✓ Cost savings.

### Get in touch

1300 237 045

info@landpac.com.au

www.landpac.com.au



LandPac Asia-Pacific is part of the Conplant Group of Companies

